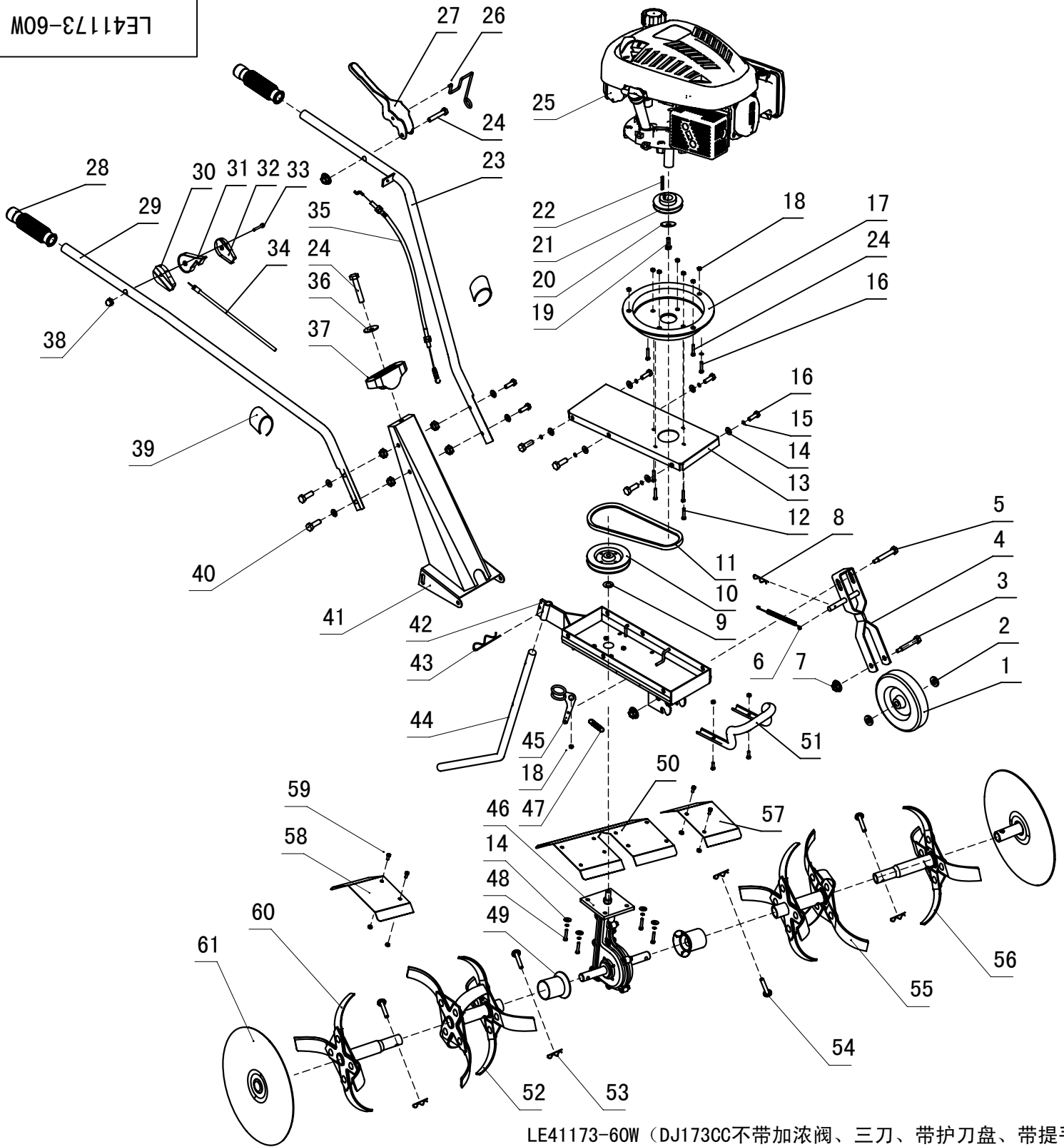


LE41173-60W

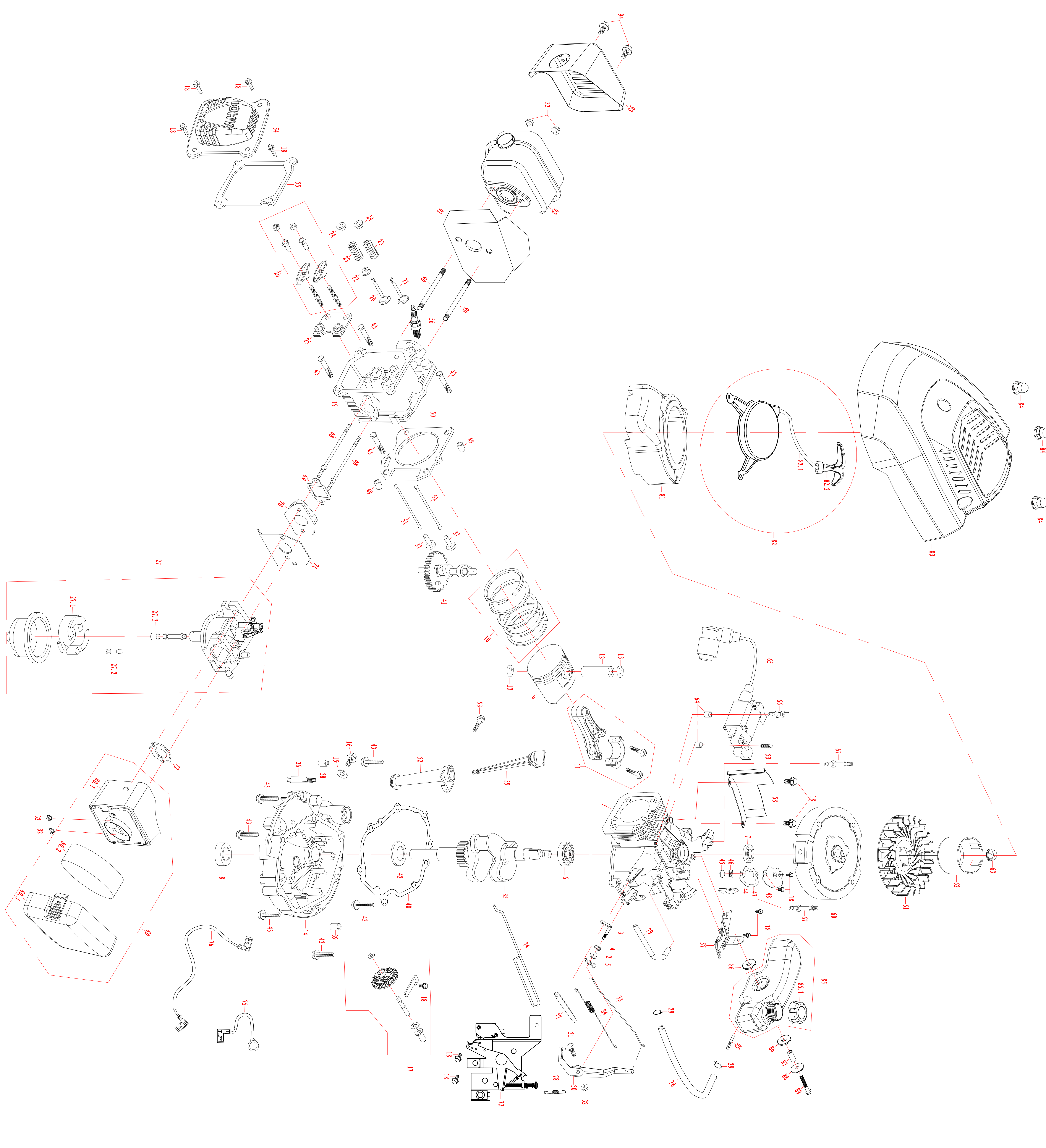


LE41173-60W (DJ173CC不带加浓阀、三刀、带护刀盘、带提手)

					上海迈博园林设备有限公司			
					爆炸图			
标记处数	分区	更改文件号	签名	日期				
设计			标准					
校对			审定					
审核			批准					
工艺					共 1 页		第 1 页	
					LE41173-60W			

Spare parts list for LE41173-60W			
Pos no	Code	English Description	dosage
1	MC41005	Wheel assembly	1
2	MC41004	Nylon washer	2
3	MC41219	Screw for wheel shaft	1
4	MC41210	wheel carrier	1
5	GB75787M10X65	Screw M10x65	1
6	MC41506	Spring	1
7	GB6183M10	Nut-M10	2
8	MC41505	R pin	1
9	GB96-13x20x1.5	Flat Washer-M10	1
10	MC41101	Belt wheel	1
11	Z610	Belt	1
12	GB5787M8x16	Screw-M8x16	4
13	MC41212	Belt Cover	1
14	GB97-8.4X24X2	Washer-8.4X24X2	14
15	GB93-8X2	Elasticity Washer	11
16	GB5787M8X20	Screw-M8X20	9
17	MC41216	Engine fixed seat	1
18	GB6183M8	Nut-M8	14
19	A38x30	Screw for drive wheel	1
20	GB96-10.5X30X2	Washer	1
21	MC41102	Drive wheel	1
22	GB1096-4.75x5x30	Flat Key4.75X5X30	1
23	MC41203	Left handle assembly	1
24	GB5787M8X40	Screw	4
25	DU173cc	Engine assembly	1
26	MC41501	Limit spring	1
27	MC41201	Clutch Handle	1
28	MC41001	Handle sheath	2
29	MC41204	Right Handle assemb	1
30	MC1256016	Right Cover for Thrott	1
31	MC1256017A	Switch handle	1
32	MC1256018	Left Cover for Throttle	1
33	GB5787M6x50	Screw M6X50	1
34	MC41602	Throttle control cable	1
35	MC41604	Drive cable	1
36	GB96-8.4x28x3	Washer 8.4x28x3	1
37	MC41002	Handle fixed seat	1
38	GB6183	Nut M6	5
39	MC1256015	Clip	2
40	GB5787M8x30	Screw M8X30	4
41	MC41202	Handle bracket	1
42	MC41205	Gear case support bra	1
43	MC41504	R Pin	1
44	MC41211	Drag rod	1
45	MC41603	tension pulley assemb	1
46	MC41601	Gear case assembly	1
47	MC41502	Resetting Spring	1
48	GB5787M8X25	Screw M8*25	4

49	MC41003	Dust guard	2
50	MC41213	Fender	1
51	MC41220	Handle	1
52	MC41207	Right Rotary blade co	1
53	MC41503	R pin	6
54	MC41218	Pin	6
55	MC41206	Left Rotary blade com	1
56	MC41208	Single Rotary blade(L	1
57	MC41214	Left Fender (Small)	1
58	MC41215	Right Fender (Small)	1
59	GB5787M6x16	Screw M6*16	4
60	MC41209	Single Rotary blade(R	1
61	MC41217	Ooutside protect disc	2



序号	零件代号	零件名称	零件名称	数量
No	Code	Part name	Part name	Quantity
1	D11P70F-11100-A	曲轴轴衬	Crankcase	1
2	D11P70F-13000-A	花键轴	Shaft, governor arm shaft	1
3	D11P70F-13001-A	轴衬	Shaft, governor arm shaft	1
4	D11P70F-13002-A	轴衬	Shaft, governor arm shaft	1
5	D11P70F-13003-A	轴衬	Shaft, governor arm shaft	1
6	D11P70F-13004-A	轴衬	Shaft, governor arm shaft	1
7	D11P70F-13005-A	轴衬	Shaft, governor arm shaft	1
8	D11P70F-13006-A	轴衬	Shaft, governor arm shaft	1
9	D11P70F-13007-A	轴衬	Shaft, governor arm shaft	1
10	D11P70F-13008-A	轴衬	Shaft, governor arm shaft	1
11	D11P70F-13009-A	轴衬	Shaft, governor arm shaft	1
12	D11P70F-13010-A	轴衬	Shaft, governor arm shaft	1
13	D11P70F-13011-A	轴衬	Shaft, governor arm shaft	1
14	D11P70F-13012-A	轴衬	Shaft, governor arm shaft	1
15	D11P70F-13013-A	轴衬	Shaft, governor arm shaft	1
16	D11P70F-13014-A	轴衬	Shaft, governor arm shaft	1
17	D11P70F-13015-A	轴衬	Shaft, governor arm shaft	1
18	D11P70F-13016-A	轴衬	Shaft, governor arm shaft	1
19	D11P70F-13017-A	轴衬	Shaft, governor arm shaft	1
20	D11P70F-13018-A	轴衬	Shaft, governor arm shaft	1
21	D11P70F-13019-A	轴衬	Shaft, governor arm shaft	1
22	D11P70F-13020-A	轴衬	Shaft, governor arm shaft	1
23	D11P70F-13021-A	轴衬	Shaft, governor arm shaft	1
24	D11P70F-13022-A	轴衬	Shaft, governor arm shaft	1
25	D11P70F-13023-A	轴衬	Shaft, governor arm shaft	1
26	D11P70F-13024-A	轴衬	Shaft, governor arm shaft	1
27	D11P70F-13025-A	轴衬	Shaft, governor arm shaft	1
28	D11P70F-13026-A	轴衬	Shaft, governor arm shaft	1
29	D11P70F-13027-A	轴衬	Shaft, governor arm shaft	1
30	D11P70F-13028-A	轴衬	Shaft, governor arm shaft	1
31	D11P70F-13029-A	轴衬	Shaft, governor arm shaft	1
32	D11P70F-13030-A	轴衬	Shaft, governor arm shaft	1
33	D11P70F-13031-A	轴衬	Shaft, governor arm shaft	1
34	D11P70F-13032-A	轴衬	Shaft, governor arm shaft	1
35	D11P70F-13033-A	轴衬	Shaft, governor arm shaft	1
36	D11P70F-13034-A	轴衬	Shaft, governor arm shaft	1
37	D11P70F-13035-A	轴衬	Shaft, governor arm shaft	1
38	D11P70F-13036-A	轴衬	Shaft, governor arm shaft	1
39	D11P70F-13037-A	轴衬	Shaft, governor arm shaft	1
40	D11P70F-13038-A	轴衬	Shaft, governor arm shaft	1
41	D11P70F-13039-A	轴衬	Shaft, governor arm shaft	1
42	D11P70F-13040-A	轴衬	Shaft, governor arm shaft	1
43	D11P70F-13041-A	轴衬	Shaft, governor arm shaft	1
44	D11P70F-13042-A	轴衬	Shaft, governor arm shaft	1
45	D11P70F-13043-A	轴衬	Shaft, governor arm shaft	1
46	D11P70F-13044-A	轴衬	Shaft, governor arm shaft	1
47	D11P70F-13045-A	轴衬	Shaft, governor arm shaft	1
48	D11P70F-13046-A	轴衬	Shaft, governor arm shaft	1
49	D11P70F-13047-A	轴衬	Shaft, governor arm shaft	1
50	D11P70F-13048-A	轴衬	Shaft, governor arm shaft	1
51	D11P70F-13049-A	轴衬	Shaft, governor arm shaft	1
52	D11P70F-13050-A	轴衬	Shaft, governor arm shaft	1
53	D11P70F-13051-A	轴衬	Shaft, governor arm shaft	1
54	D11P70F-13052-A	轴衬	Shaft, governor arm shaft	1
55	D11P70F-13053-A	轴衬	Shaft, governor arm shaft	1
56	D11P70F-13054-A	轴衬	Shaft, governor arm shaft	1
57	D11P70F-13055-A	轴衬	Shaft, governor arm shaft	1
58	D11P70F-13056-A	轴衬	Shaft, governor arm shaft	1
59	D11P70F-13057-A	轴衬	Shaft, governor arm shaft	1
60	D11P70F-13058-A	轴衬	Shaft, governor arm shaft	1
61	D11P70F-13059-A	轴衬	Shaft, governor arm shaft	1
62	D11P70F-13060-A	轴衬	Shaft, governor arm shaft	1
63	D11P70F-13061-A	轴衬	Shaft, governor arm shaft	1
64	D11P70F-13062-A	轴衬	Shaft, governor arm shaft	1
65	D11P70F-13063-A	轴衬	Shaft, governor arm shaft	1
66	D11P70F-13064-A	轴衬	Shaft, governor arm shaft	1
67	D11P70F-13065-A	轴衬	Shaft, governor arm shaft	1
68	D11P70F-13066-A	轴衬	Shaft, governor arm shaft	1
69	D11P70F-13067-A	轴衬	Shaft, governor arm shaft	1
70	D11P70F-13068-A	轴衬	Shaft, governor arm shaft	1
71	D11P70F-13069-A	轴衬	Shaft, governor arm shaft	1
72	D11P70F-13070-A	轴衬	Shaft, governor arm shaft	1
73	D11P70F-13071-A	轴衬	Shaft, governor arm shaft	1
74	D11P70F-13072-A	轴衬	Shaft, governor arm shaft	1
75	D11P70F-13073-A	轴衬	Shaft, governor arm shaft	1
76	D11P70F-13074-A	轴衬	Shaft, governor arm shaft	1
77	D11P70F-13075-A	轴衬	Shaft, governor arm shaft	1
78	D11P70F-13076-A	轴衬	Shaft, governor arm shaft	1
79	D11P70F-13077-A	轴衬	Shaft, governor arm shaft	1
80	D11P70F-13078-A	轴衬	Shaft, governor arm shaft	1
81	D11P70F-13079-A	轴衬	Shaft, governor arm shaft	1
82	D11P70F-13080-A	轴衬	Shaft, governor arm shaft	1
83	D11P70F-13081-A	轴衬	Shaft, governor arm shaft	1
84	D11P70F-13082-A	轴衬	Shaft, governor arm shaft	1
85	D11P70F-13083-A	轴衬	Shaft, governor arm shaft	1
86	D11P70F-13084-A	轴衬	Shaft, governor arm shaft	1
87	D11P70F-13085-A	轴衬	Shaft, governor arm shaft	1
88	D11P70F-13086-A	轴衬	Shaft, governor arm shaft	1
89	D11P70F-13087-A	轴衬	Shaft, governor arm shaft	1
90	D11P70F-13088-A	轴衬	Shaft, governor arm shaft	1
91	D11P70F-13089-A	轴衬	Shaft, governor arm shaft	1
92	D11P70F-13090-A	轴衬	Shaft, governor arm shaft	1
93	D11P70F-13091-A	轴衬	Shaft, governor arm shaft	1
94	D11P70F-13092-A	轴衬	Shaft, governor arm shaft	1
95	D11P70F-13093-A	轴衬	Shaft, governor arm shaft	1

1	A	新图			
设计	2012-2-29	审核			
制图		校对			
材料		批准			

爆炸图
D11P70F
重庆大江动力
设备制造有限公司

price list of spare parts for the HS 1P70F gasoline engine

NO.	Code		quantity
1	DJ1P70F-11100-A	Crankcase	1
2	DJ1P65F-15009-A	Seal,governor arm shaft	1
3	DJ1P65F-15001-A	Shaft,Governor Arm	1
4	DJ1P65F-15002-A	washer,governor arm shaft	1
5	DJ168F-15003-A	Pin,Lock	1
6	GB276-89-6205	Ball bearing	1
7	DJ1P70F-11044-A	Oil Seal	1
8	DJ1P70F-11014-A	Oil Seal	1
9	DJ1P70F-12001-A	Piston	1
10	DJ170F-12300-A	Scraper Ring Set ,Piston	1
11	DJ1P70F-12200-A	Rod Assembly., Connecting	1
12	DJ170F-12002-A	Pin, Piston	1
13	DJ168F-12003-A	Clip, Piston	2
14	DJ1P70F-11001-A	Cover Assembly, Crankcase	1
15	DJ168F-11005-A	Washer,Drain Plug	1
16	DJ168F-11004-A	Bolt, Drain Plug	1
17	DJ1P70F-15100-A	Governor Assembly	1
18	GBT16674-B6-12	Bolt	13
19	DJ1P70F-11200-A	Cylinder head	1
20	DJ1P70F-13001-A	Valve,In	1
21	DJ1P70F-13002-A	Valve Exhaust	1
22	DJ1P65F-13010-A	Returner,Intake Valve	1
23	DJ168F-13003-A	Spring,Valve	2
24	DJ168F-13004-A	Seat, valve spring,in	2
25	DJ1P70F-13300-A	Plate,Push Rod Guide	1
26	DJ168F-13200-A	Rocker assy	2
27	DJ1P70F-14100-A	Carburetor Assembly	1
27,1	DJ1P65F-14106-A	float	1
27,2	DJ1P65F-14109-A	fuel injection needle	1
27,3	DJ1P70F-14112-B	main metering jet	1
28	DJ1P70F-14007-D	Fuel line	1
29	DJ1P65F-14008-B	Clip,fuel line	2
30	DJ1P70F-15004-A	Governor arm	1
31	DJ168F-15005-A	Bolt,governor Arm	1
32	GB6177-N-6	Nut	5
33	DJ1P70F-15006-A	Rod,Governor	1
34	DJ1P65F-15008-C	Spring,Throttl Return	1
35	DJ1P70F-12100-MB	Crankshaft Assembly	1
36	DJ1P70F-11018-A	Pipe, Oil Defense	1
37	DJ1P65F-13009-B	Lifter,Valve	2
38	DJ168F-11002-C	Dowel pin,casecover	1
39	DJ168F-11002-B	Dowel pin,casecover	1
40	DJ1P70F-11003-A	Packing,casecover	1
41	DJ1P70F-13100-A	Camshaft Assembly	1
42	DJ1P65F-12005-B	Washer,crankshaft	1
43	GBT16674-B8-50	Bolt	10
44	DJ1P65F-11023-A	Filter,Breather	1

45	DJ1P70F-11021-A	cover,Breather Valve	1
46	DJ1P65F-11054-A	Spring,Breather Valve	1
47	DJ1P70F-11020-B	Gasket,Breather Chamber	1
48	DJ1P70F-11019-A	Cap,Breather Chamber	1
49	DJ168F-11009-A	Pin, Dowel	2
50	DJ1P70F-11010-A	Gasket,Cylinder Head	1
51	DJ170F-13008-B	Rod,Push	2
52	DJ1P65F-11603-A	Extension, Oil Filler	1
53	GBT16674-B6-30	Bolt	2
54	DJ1P65F-11300-B	Cover comp,cylinder head	1
55	DJ1P65F-11011-B	Packing,headcover	1
56	DJ1P65F-18500-B	Spark Pulg	1
57	DJ1P70F-14017-B	Stay,Oil Tank	1
58	DJ1P70F-11012-A	Shroud	1
59	DJ1P65F-11007-A-0	Dipstick	1
60	DJ1P70F-16200-B	Flywheel Assembly	1
61	DJ1P70F-16002-A	Fan,recoil starter	1
62	DJ1P70F-16000-A	Pulley,Starter	1
63	DJ168F-16205-A	Nut	1
64	DJ1P65F-18103-B	Collar,Ignition	2
65	DJ1P65F-18100-D	ignition coil assy	1
66	DJ1P70F-18104-A	Bolt Stud,ignition coil	1
67	DJ1P70F-16119-A	Bolt Stud,Recoil Starter	2
68	DJ1P70F-14001-A	Bolt, Stud	2
69	DJ1P70F-14003-B	Packing,Intake	1
70	DJ1P70F-14004-A	Insulator,carburetor	1
71	DJ1P70F-14005-A	Packing,carburetor	1
72	DJ1P65F-14027-A	Spacer,carburetor	1
73	DJ1P70F-15200-C	Shroud assy,upper	1
74	DJ1P70F-15011-B	Rod,Ckoke	1
75	DJ1P65F-18401-F	flameout wire	1
76	DJ1P65F-18401-E	flameout wire	1
77	DF6500H-11033-A	Clip,wire harness	1
78	DJ1P70F-15007-B	Spring,Governor	1
79	DJ1P70F-11013-A	Tube,Breather	1
80	DJ1P65F-14200-D	Air Cleaner Assembly	1
80,1	DJ1P65F-14203-D	bottom cover,air cleaner	1
80,2	DJ1P65F-14213-B	foam	1
80,3	DJ1P65F-14204-B	cover,air cleaner	1
81	DJ1P70F-16121-B	Hood,Fan	1
82	DJ1P65F-16130-B-0	Starter Comp,Recoil	1
82,1	DJ1P65F-16111-A	rope	1
82,2	DJ1P65F-16110-B-0	Grip Starter	1
83	DJ1P70F-16120-C-0	Cover,Fan	1
84	GBT802-N-6	Nut	3
85	DJ1P70F-14300-B-0	Fuel Tank Assembly	1
85,1	DJ1P65F-14306-B-0	fuel tank cap comp	1
86	DJ1P65F-14304-A	vibration isolation pad	2
87	DJ1P65F-14305-A	bushing, fuel tank	1
88	DJ1P65F-14024-A	Washer, Fuel Tank	1

89	GBT16674-B8-45	Bolt	1
90	DJ1P65F-14001-B	Bolt, Stud	2
91	DJ1P65F-14006-B	Packing,Exhaust	1
92	DJ1P65F-14400-B	Muffler COMP	1
93	DJ1P65F-14018-B	Shield,out muffler	1
94	GBT16674-B6-8-H	Bolt	2
95	DJ1P65F-14026-A	filter	1